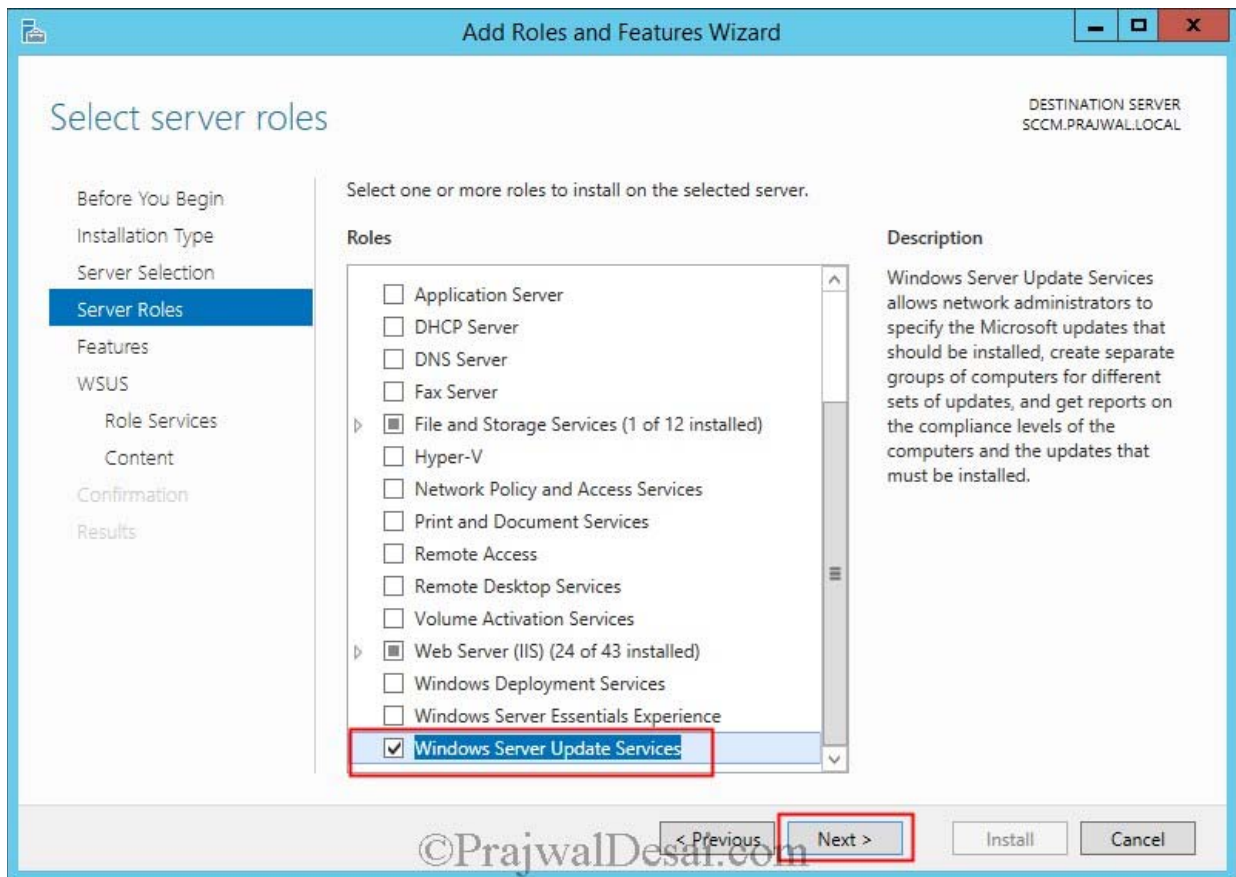


## Installing WSUS for Configuration Manager 2012 R2

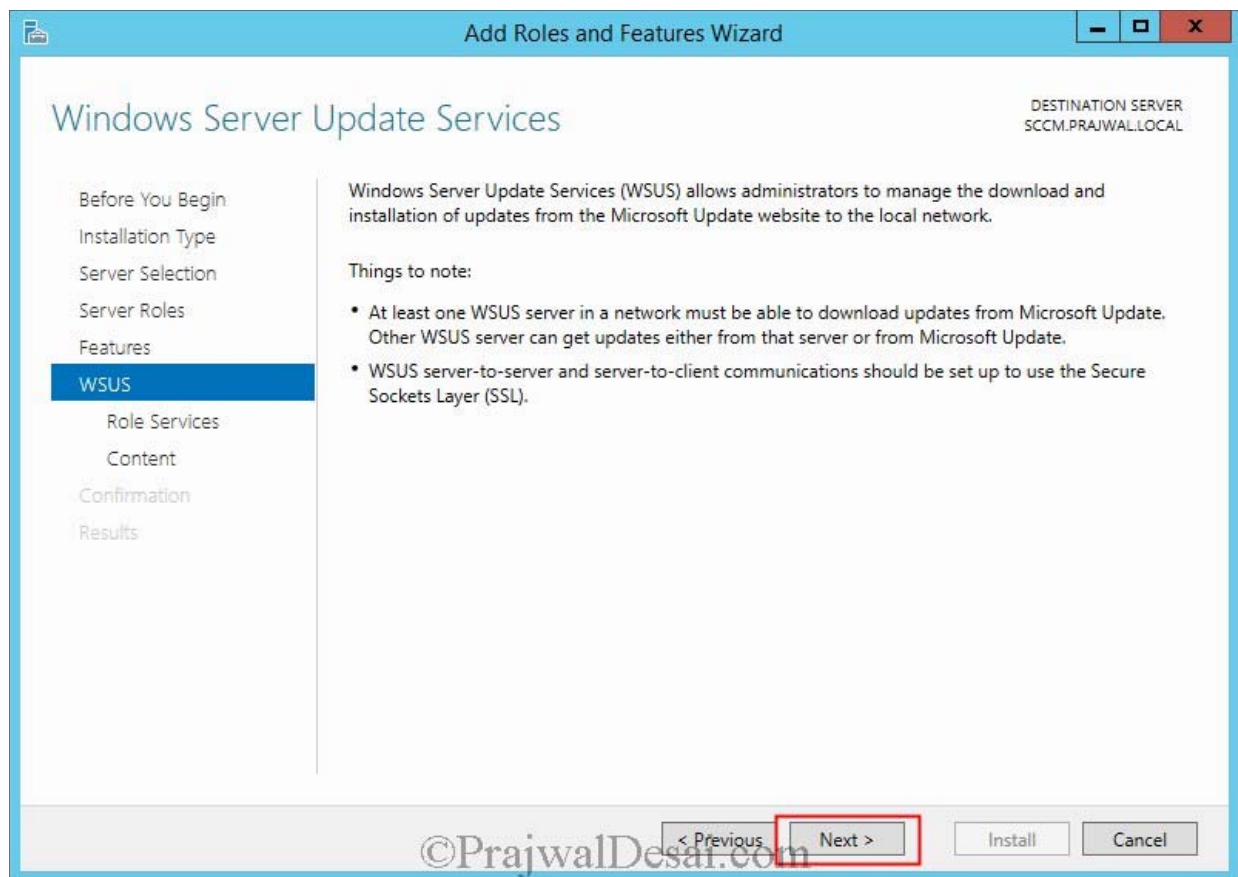
Prajwal Desai

After installing [SQL server for Configuration Manager 2012 R2](#), we will now see the steps for Installing WSUS for Configuration Manager 2012 R2. WSUS is Microsoft's separate, stand-alone server-based product for distributing updates to Windows systems. WSUS also uses the WUA to scan for patch applicability and subsequently install updates delivered by WSUS. WSUS 3.0 Service Pack 2 is required for System Center 2012 R2 Configuration Manager. SCCM 2012 R2 supports only 64-bit site systems, you must use the 64-bit version of WSUS on one of the supported 64-bit editions of Windows Server. The WSUS 3.0 SP2 is available here:- <http://www.microsoft.com/en-us/download/details.aspx?id=5216>

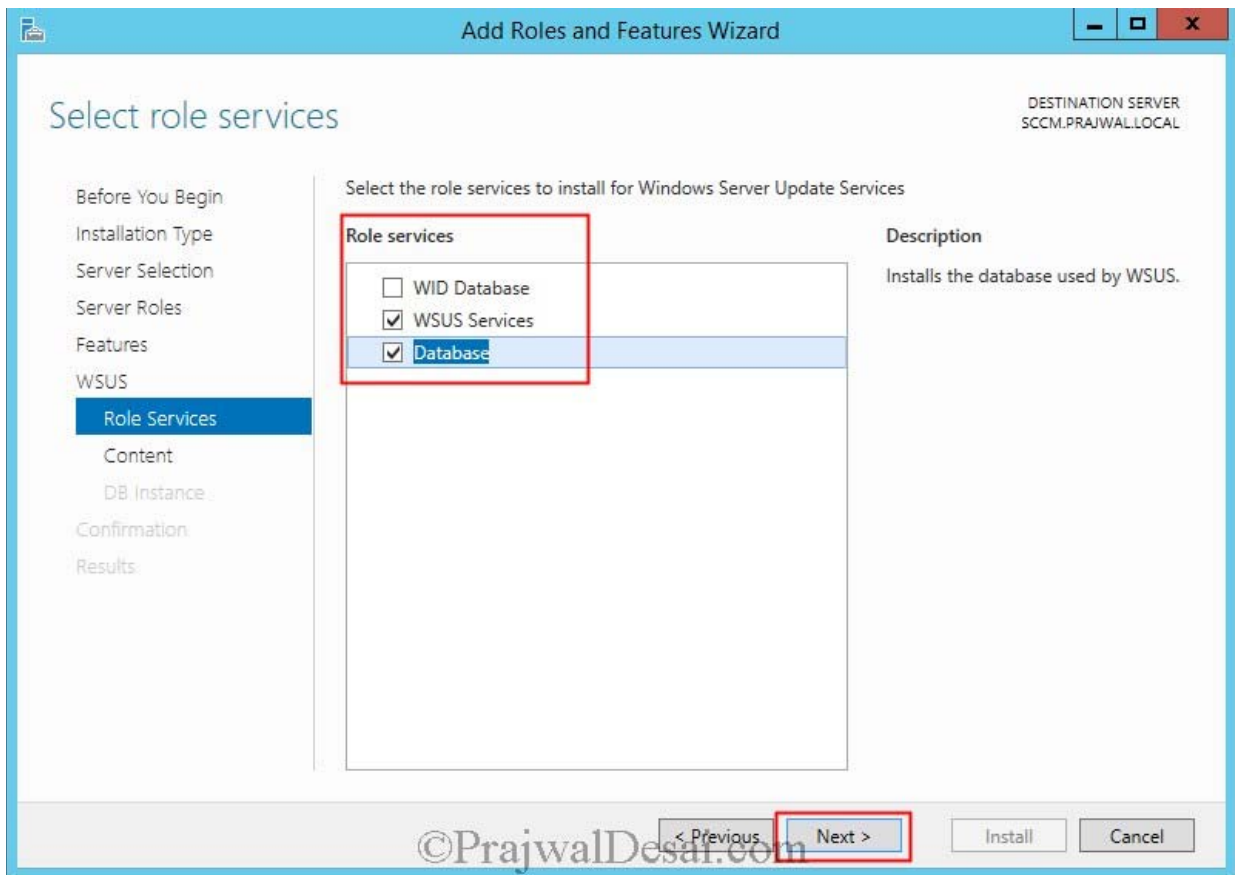
To install WSUS on Windows Server 2012 R2, click on **Server Manager**, click on **Manage**, click **Add Roles and Features**, select **Windows Server Update Services** and click on **Next**.



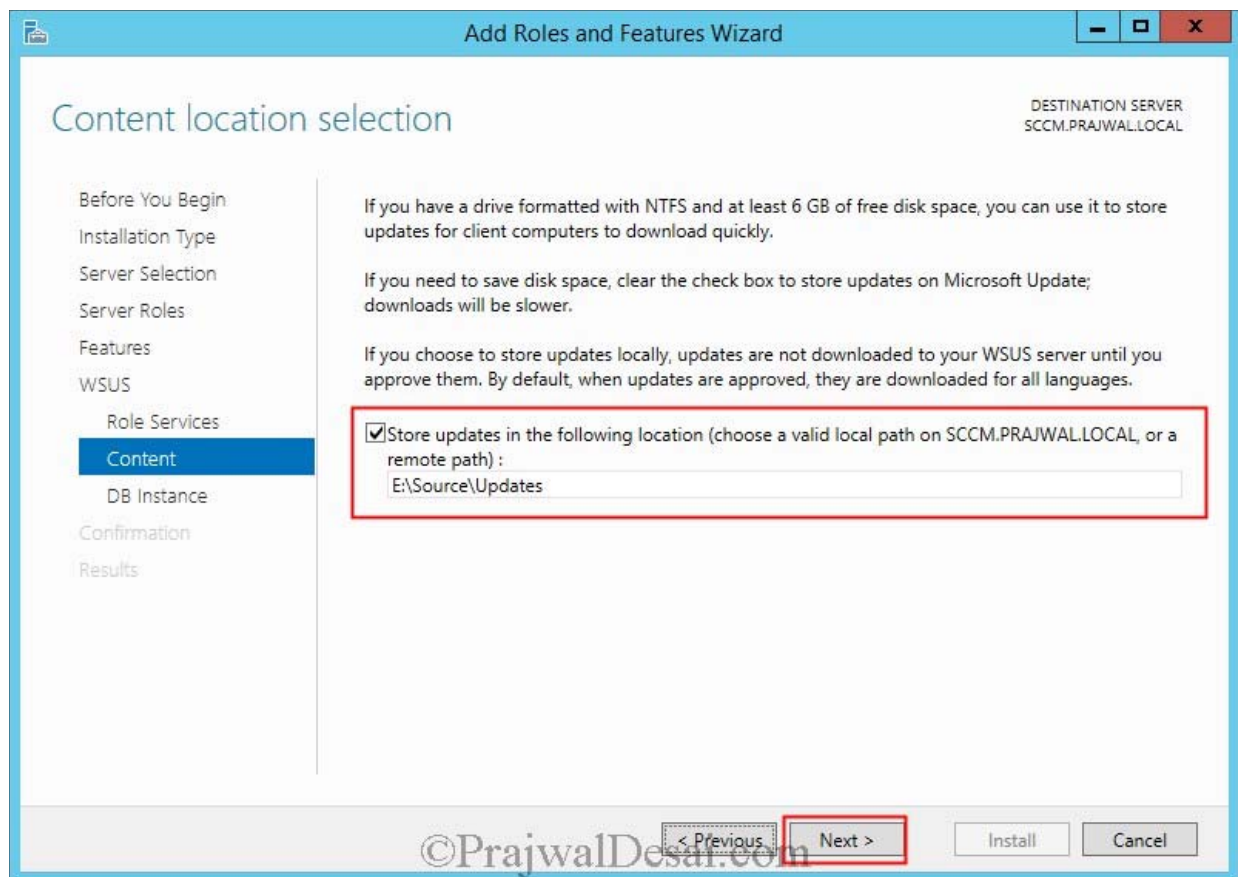
Click **Next**.



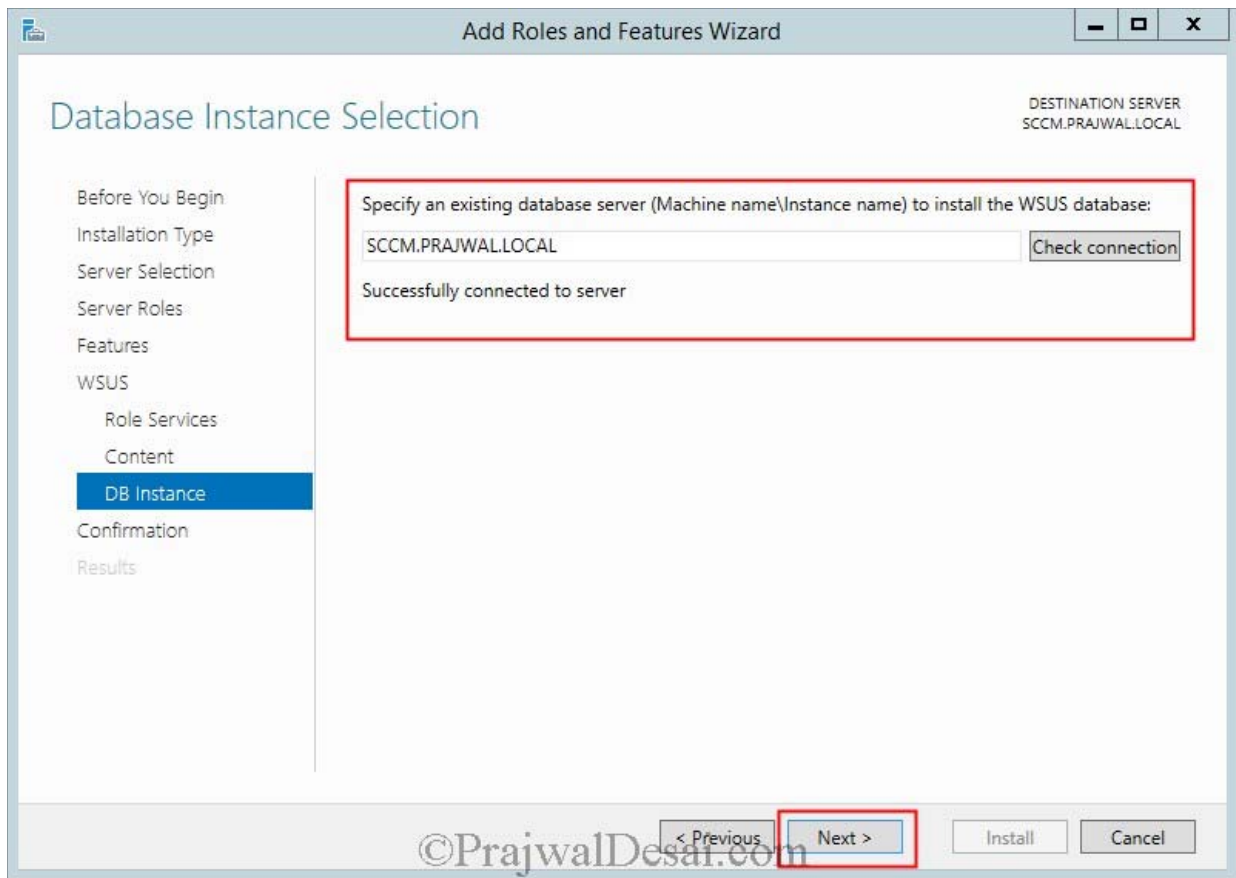
Choose **WSUS Services** and **Database** as these are the ones that are actually required. We will not select WID Database here. Click on **Next**.



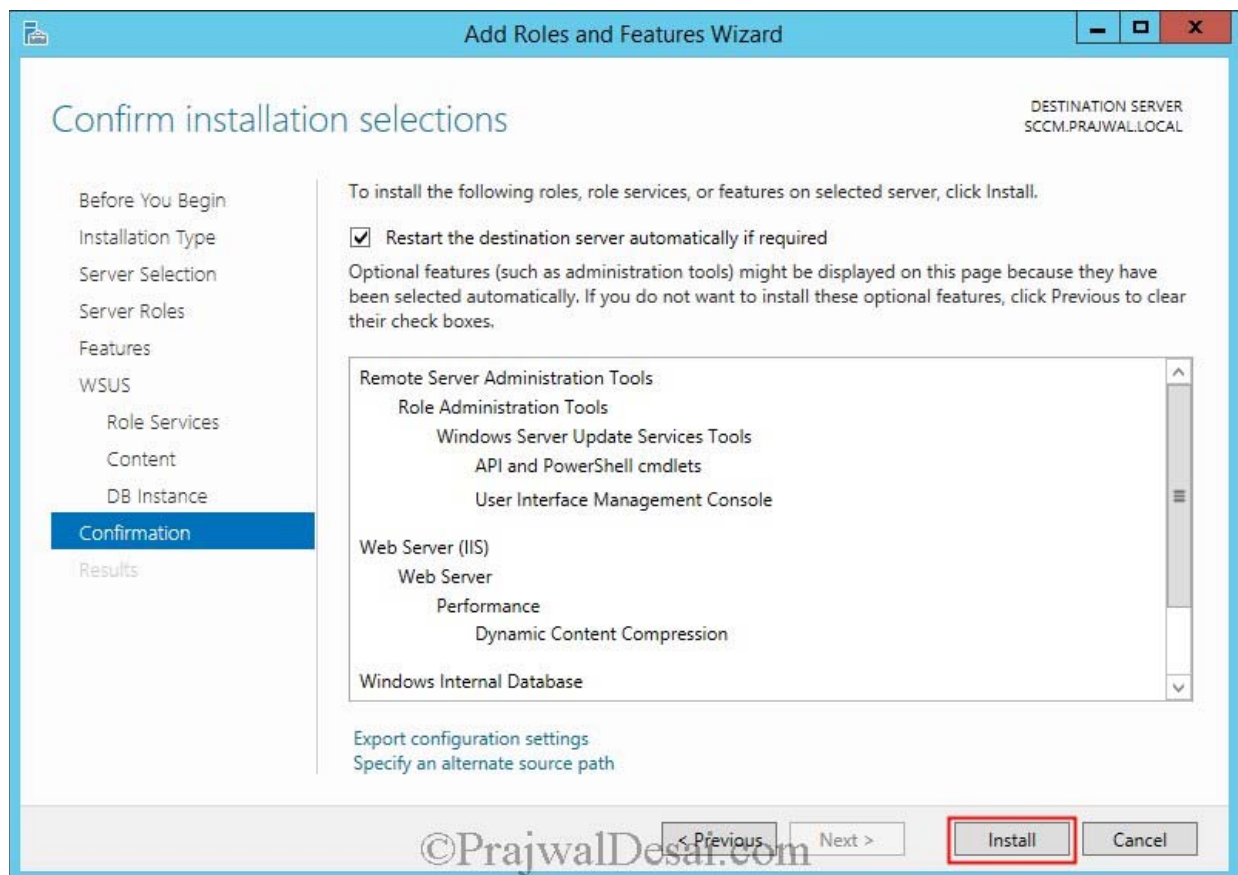
**Content Location Selection** – In this folder the WSUS downloads and stores license terms for specific software updates in the update content folder. During the update synchronization process, Configuration Manager looks for applicable license terms in the content folder. If it cannot find the license terms, it will not synchronize the update. Provide a folder path and click on **Next**.



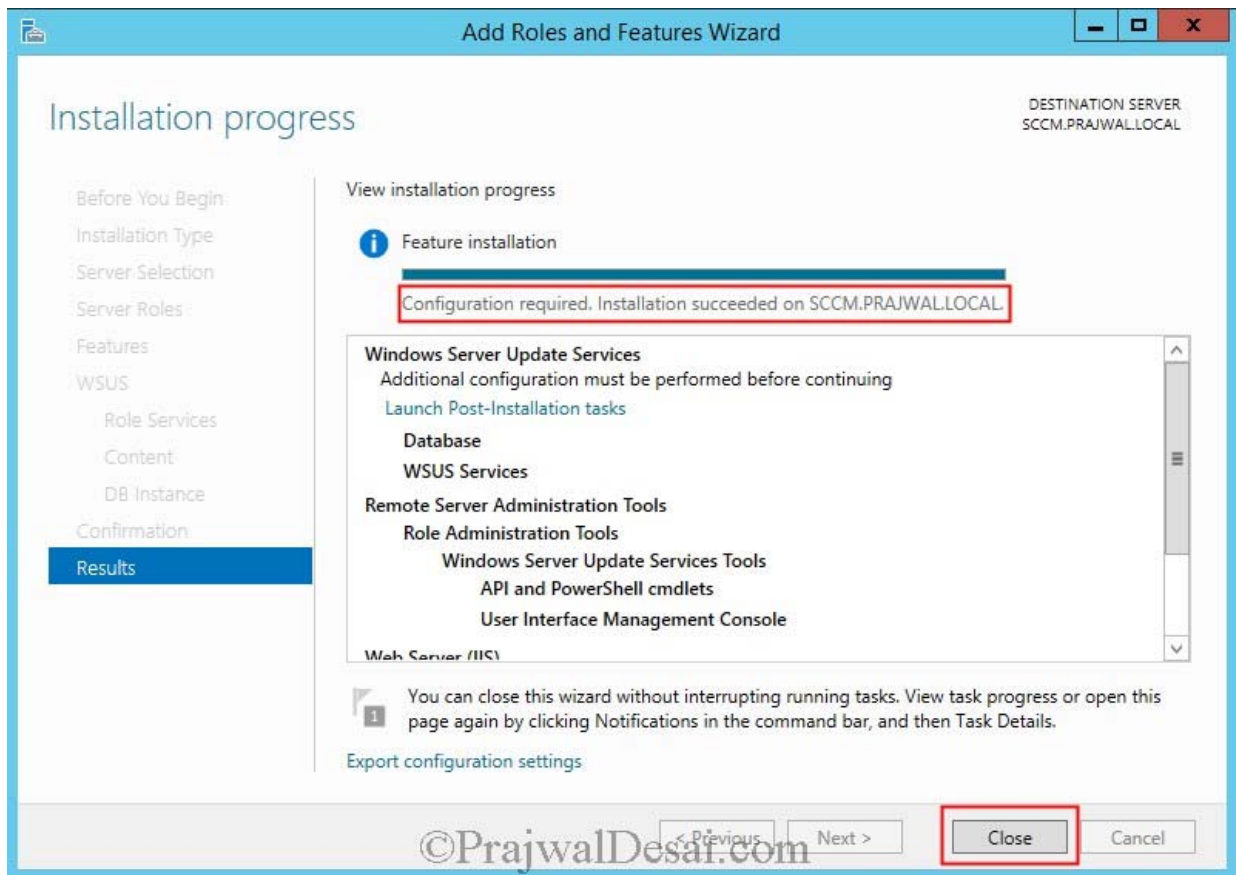
**Database Instance Selection** – Specify the database server where you want to store the WSUS database. Click on **Check connection** and you must see the message **Successfully connected to server**. Click on **Next**.



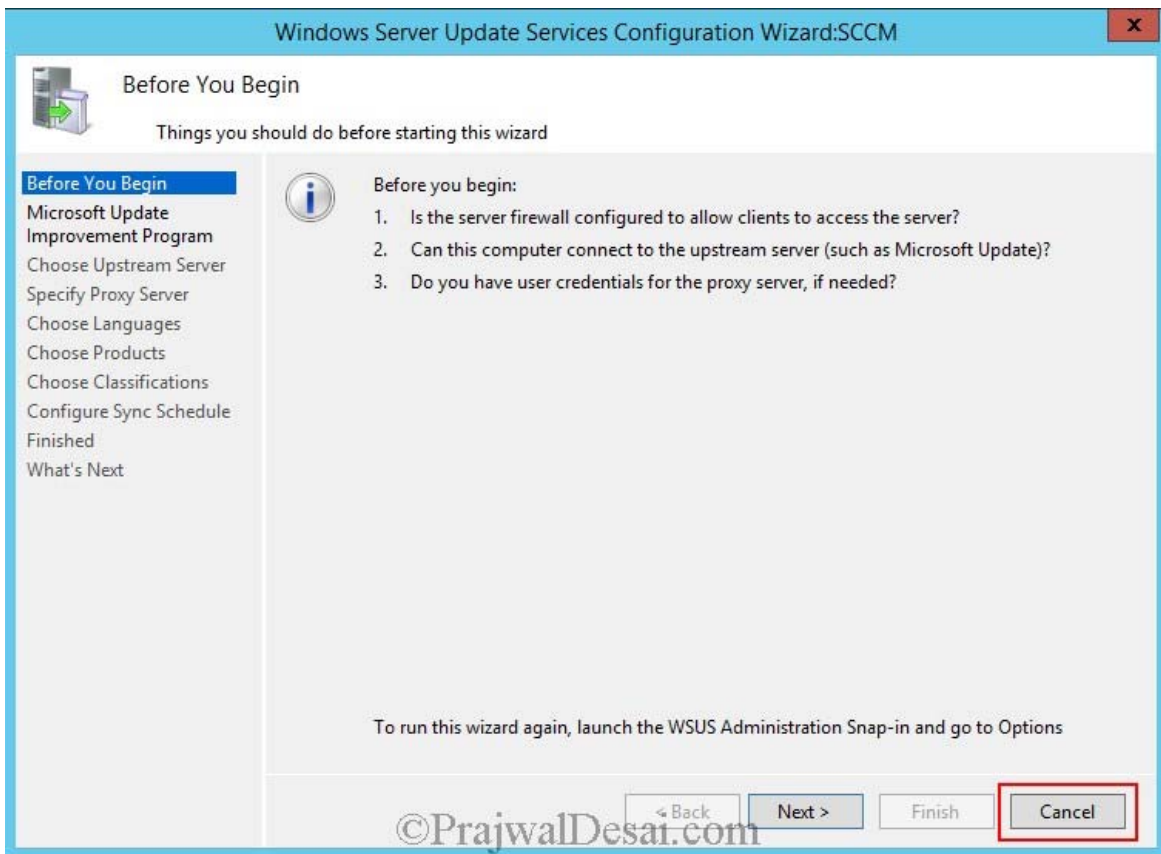
Click on **Install**.



Once the installation is complete DO NOT click on **Launch Post-Installation tasks**. Click on **Close**.



We should not configure the WSUS configuration wizard, going forward Configuration Manager must be used to synchronize updates, download updates and deploy updates. It is okay to go into the WSUS console to review updates or the synchronization status, but you should not perform tasks such as approving or declining updates because it can adversely affect Configuration Manager's software update management capabilities. Click on **Cancel** to close the wizard. With this the installation of WSUS for Configuration Manager 2012 R2 is complete.



Just to see if the database has been created, launch the SQL server management studio and you should the database **SUSDB**.

