

# Orchestrator Integration Pack Import

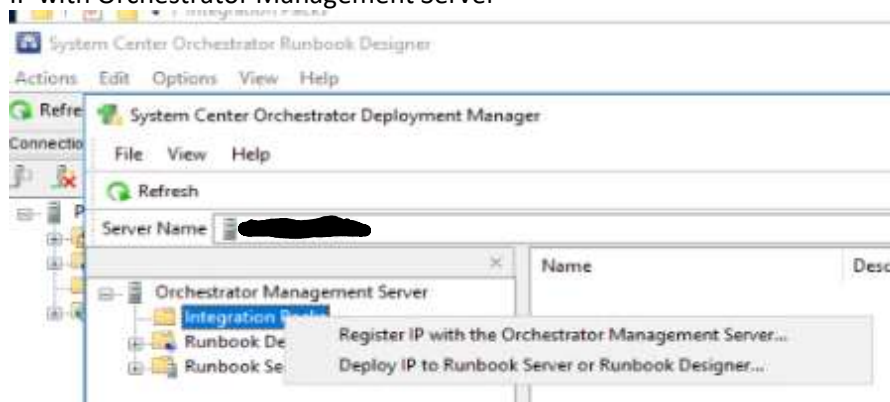
Monday, October 2, 2017 8:12 AM

It has been several years since I have done any integration pack imports in to the orchestrator system, so as a refresher (mostly for myself), I thought I'd document the process while deploying a new Orchestrator 2016 server.

First off, make sure to forget everything you know about logical import processes, and run these few steps get everything up and running. Also, make sure the 2016 integration packs are being deployed, not the 2012 Integration packs. The downloadable exe is names SC2016\_ips.exe.

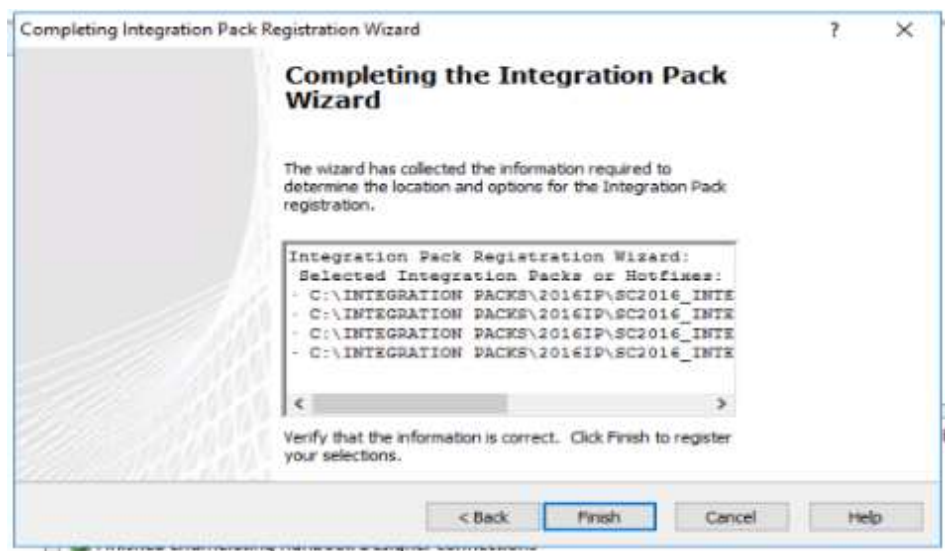
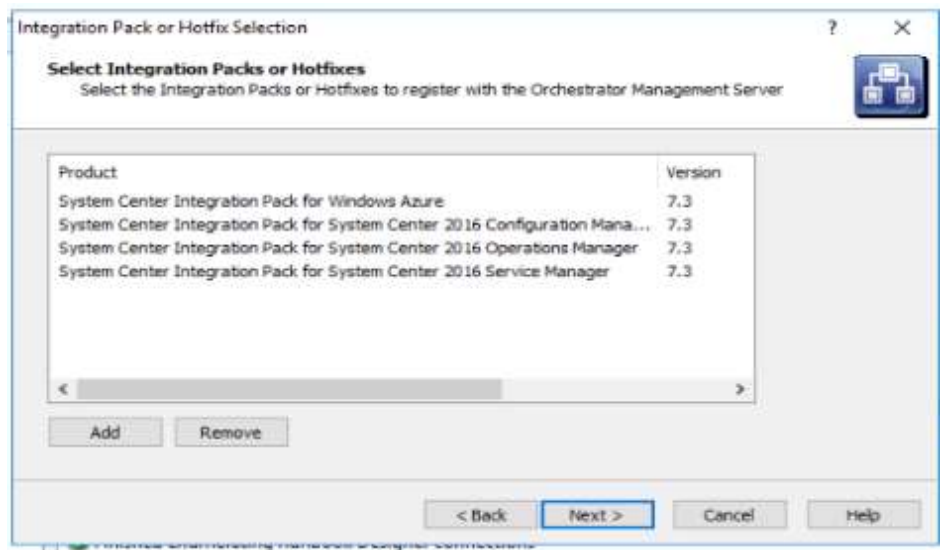
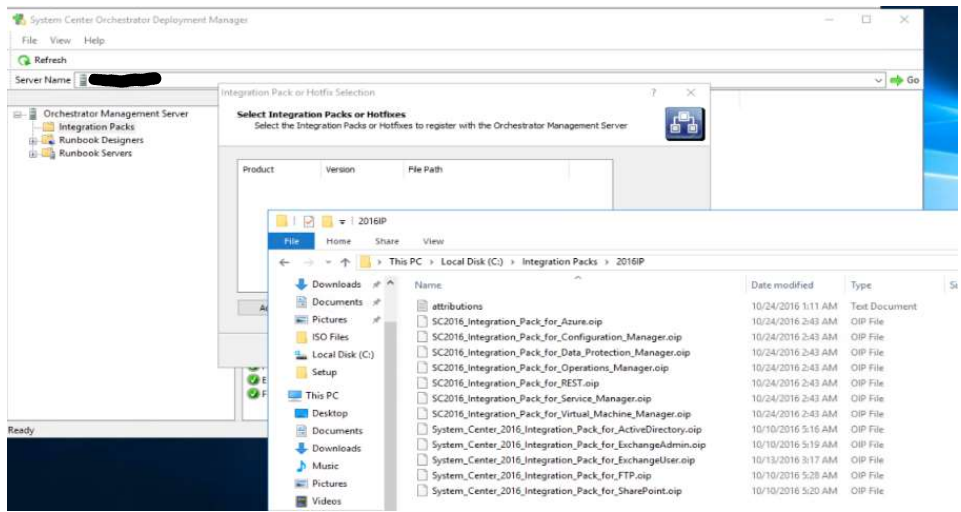
[https://www.microsoft.com/en-us/download/details.aspx?id=54098&WT.mc\\_id=rss\\_alldownloads\\_all](https://www.microsoft.com/en-us/download/details.aspx?id=54098&WT.mc_id=rss_alldownloads_all)

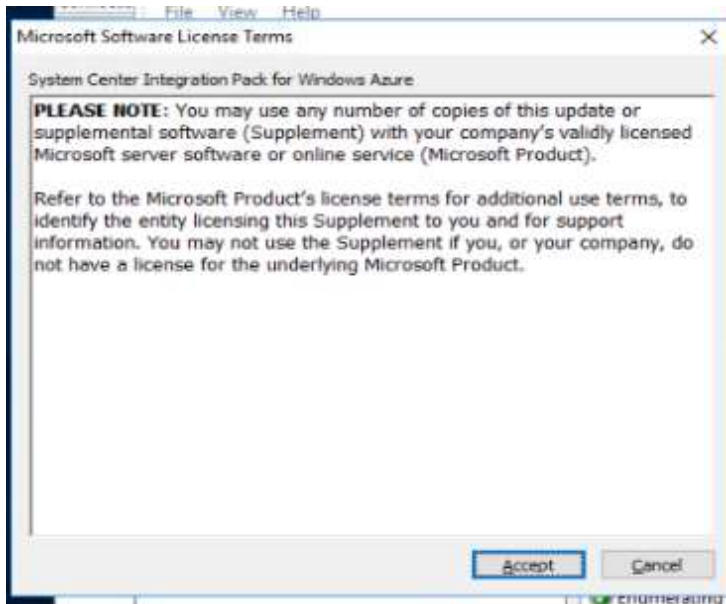
1. Launch the Orchestrator Deployment Manager, then right click on the Integration Packs folder and select Register IP with Orchestrator Management Server



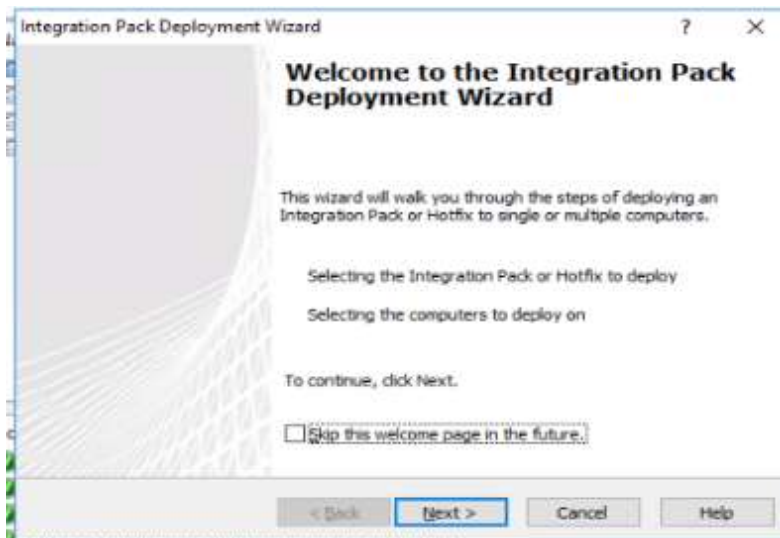
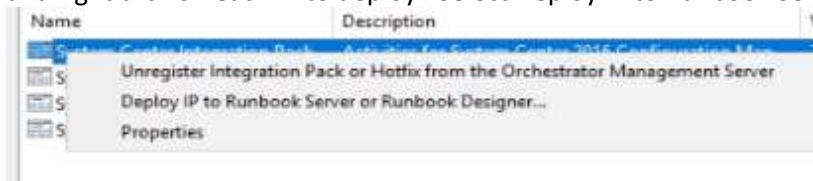
2. Run through the IP registration wizard. This part is straight forward.



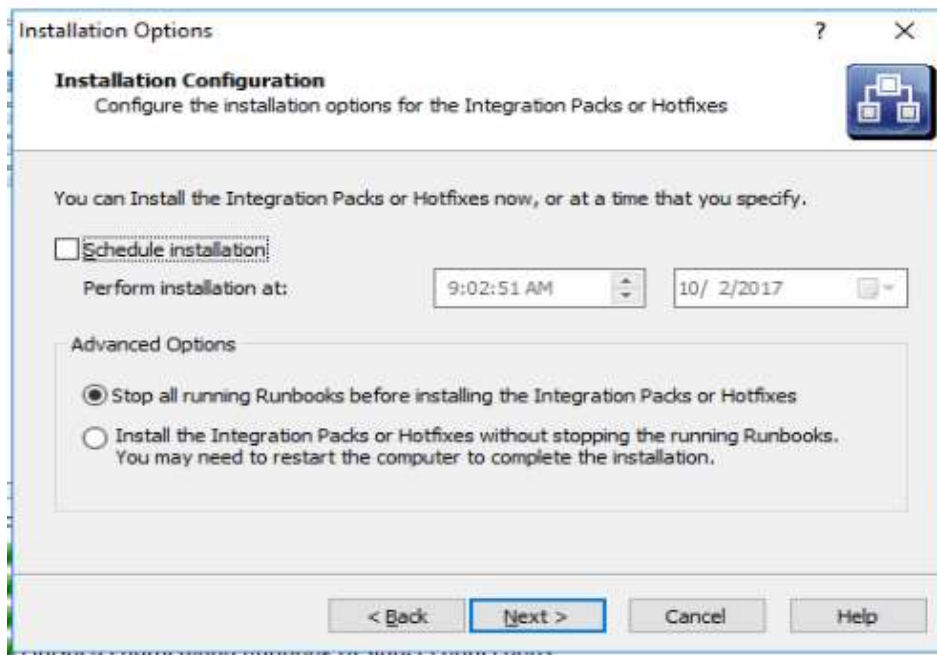
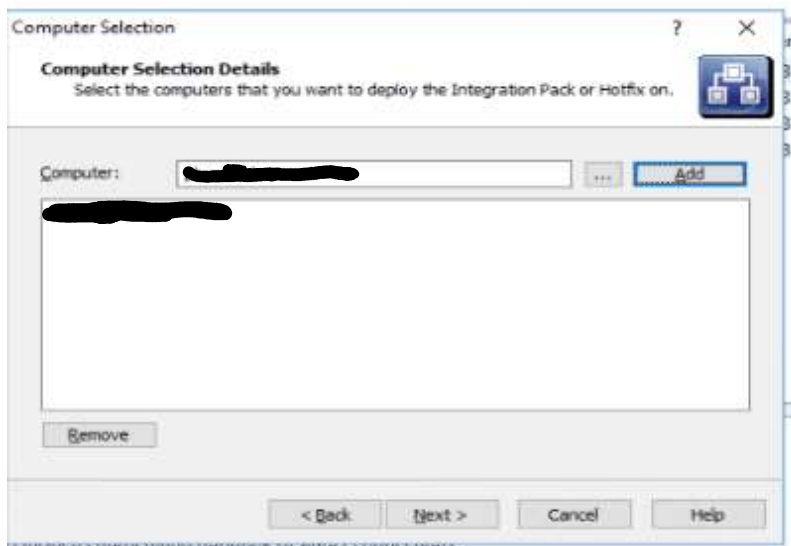
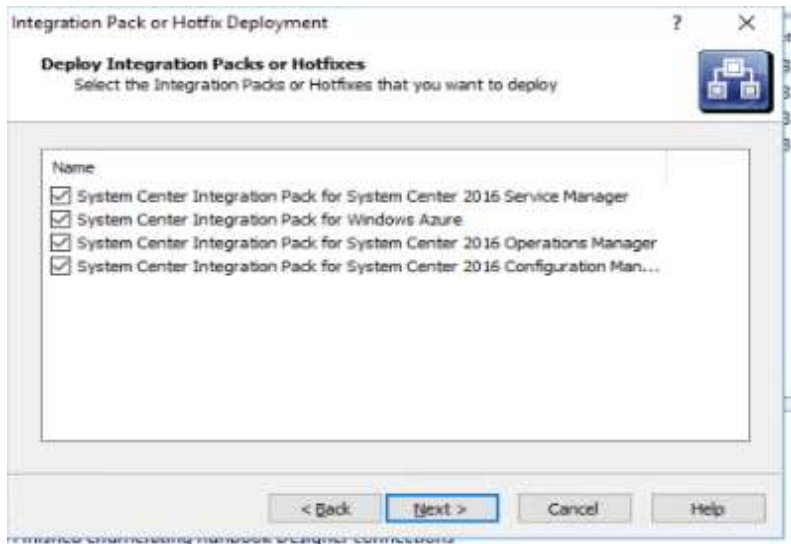


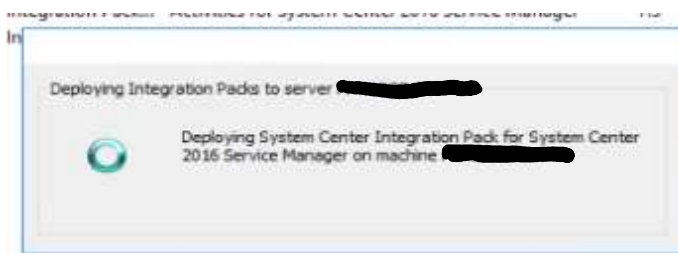
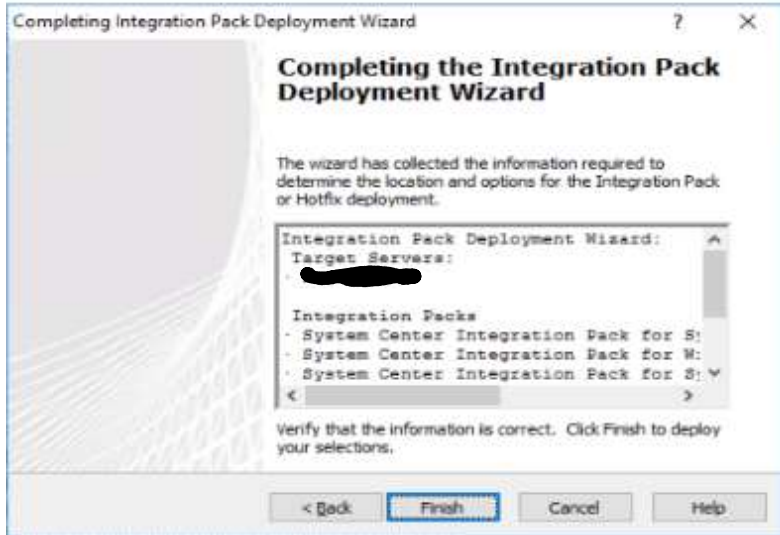


2. So now that the Integration Packs are imported, it is time to deploy them. So, back to the Deployment Manager, and right click on each IP to deploy. Select Deploy IP to Runbook Server or Runbook Designer.



Select the Ips to deploy





3. Now, it is time to configure the Ips. Each Integration Pack needs some information, typically, Server name, Service name and password.

