

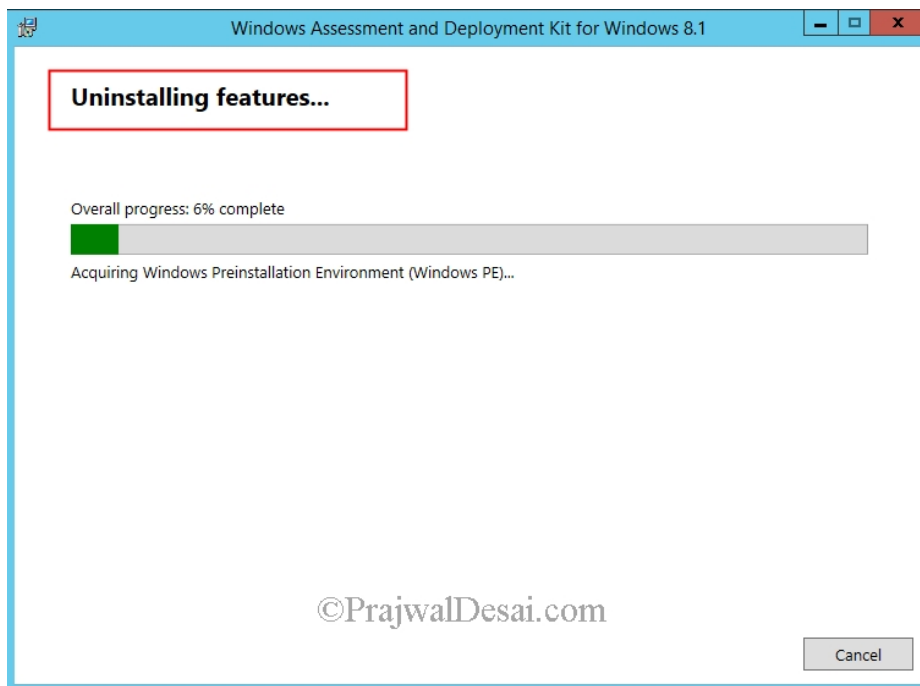
This is a guide for Step by Step upgrade SCCM 2012 R2 to SCCM 1606. Most of you might have question as to why upgrade to SCCM 1606, why not directly upgrade to current branch 1702 ?. Currently with the available baseline media you have the option to upgrade to [SCCM 1511](#) or [SCCM 1606](#). In future once the [baseline media](#) for [current branch 1702](#) is available, you can then plan to upgrade your SCCM setup to [update 1702](#). Once you upgrade to version 1511 or 1606, the future updates are available using the Updates and servicing channel. Therefore you can use the baseline media (1606 or 1511) to install a new site, or upgrade from SCCM 2012 R2, [SCCM 2012 with Service Pack 1](#) or SCCM 2012 with Service Pack 2.

My lab setup is running a VM that is installed with Windows Server 2012 R2 OS. On this server the SCCM 2012 R2 (no service pack) is installed. The SQL server installed is SQL server 2012 enterprise edition with SP3. The ADK version 8.1 is installed and all the [prerequisites](#) are configured.

Upgrade Paths :- If you are looking for upgrade paths using baseline media, here is my post that lists the info – [System Center Configuration Manager Upgrade Paths](#).

Upgrade Approach – You begin the upgrade with the top-level site of the hierarchy first. It could be either a central administration site or a stand-alone primary site. After the upgrade of a central administration site is completed, you can upgrade child primary sites in any order that you want.

ADK Version – I am sure you would be running Windows ADK version 8.1 and SCCM 2012 R2 (SP1 / SP2). This version of ADK is not supported by SCCM 1606. So you have to uninstall ADK version 8.1 and install [ADK version 1607](#) prior to upgrade. ADK version 8.1 can be uninstalled from **Control Panel > Programs > Programs and Features**.

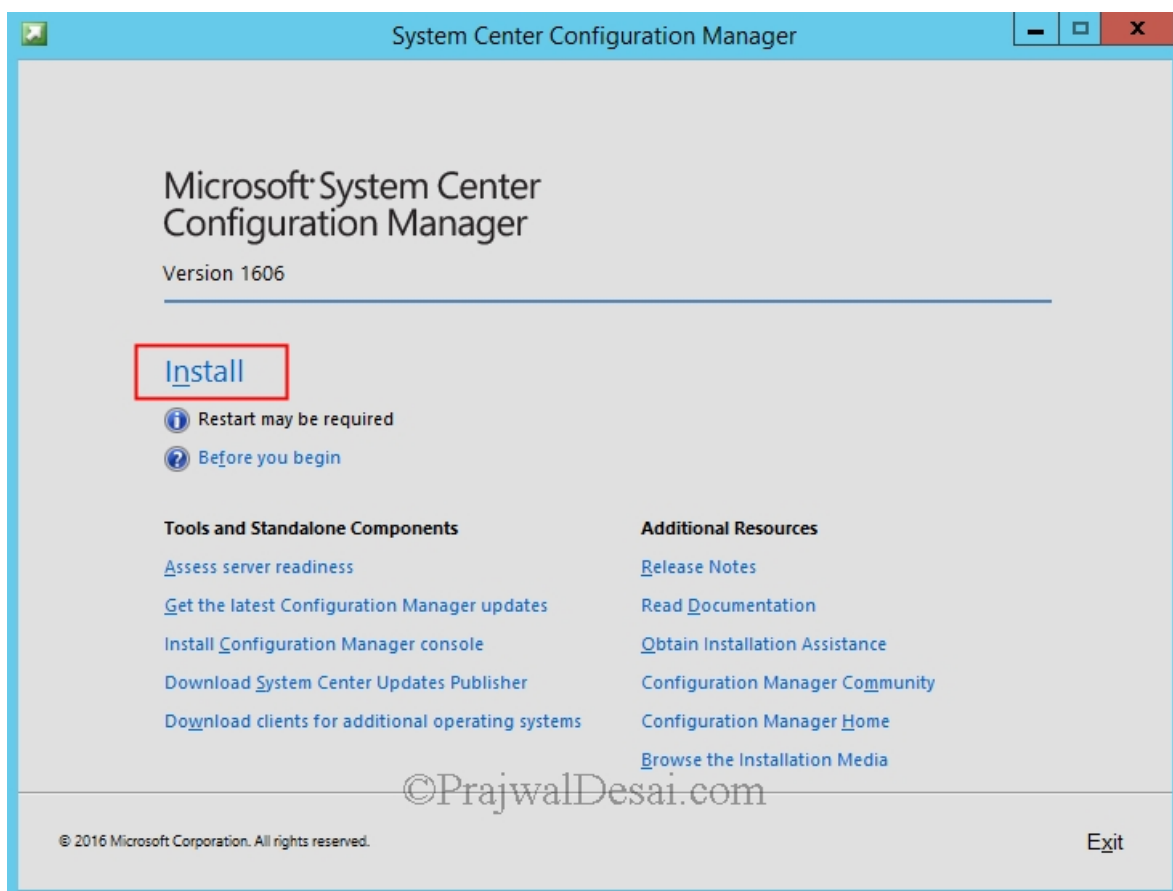


SQL Server Check – This is a very important check and if you have got SQL version that isn't supported by SCCM 1606, the upgrade would fail instantly. So I suggest you to upgrade SQL server to the version that is supported by SCCM 1606. You can also perform a SQL server upgrade using this [post](#). Here is a post that lists the [supported SQL Server versions for SCCM Current Branch](#). As a example, I have got [SCCM 2012 R2](#) Configuration Manager and [SQL server 2012](#) enterprise edition with SP3. Now this SQL server version is supported by SCCM 1606 as well. However in your case if you find your SQL server is not supported by SCCM 1606, then you must upgrade it to minimum supported version. I would also recommend to test site database upgrade using this [guide](#). Most of all before beginning the upgrade, make sure you [backup your ConfigMgr 2012 R2](#) server.

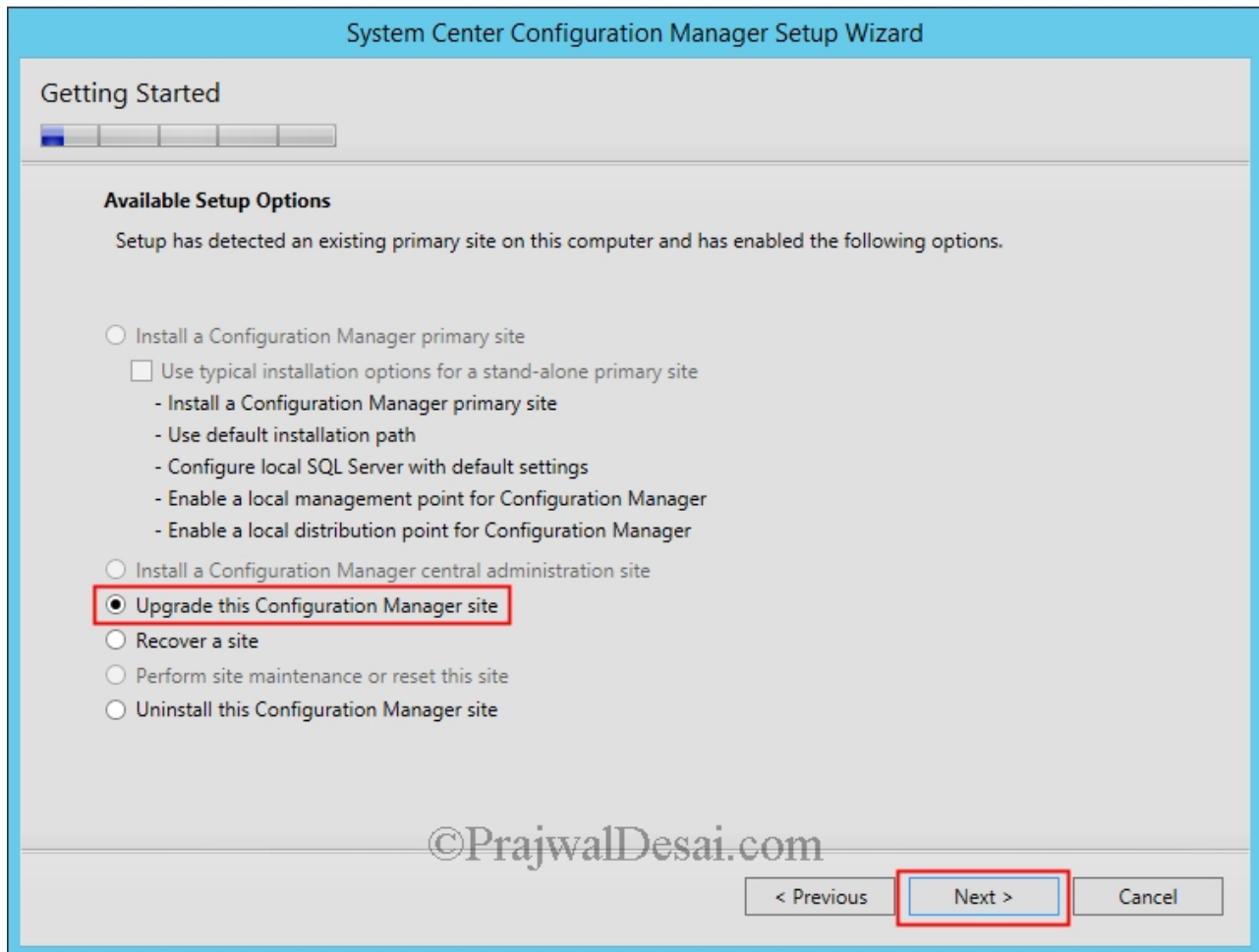
Disable SQL Replication and Maintenance tasks – Most of all before you perform upgrade, disable the SQL replication. Also, maintenance tasks such as Backup Site Server, Delete aged client discovery data, Delete aged client operations must be disabled before you upgrade.

Step by Step upgrade SCCM 2012 R2 to SCCM 1606

To upgrade SCCM 2012 R2 to SCCM 1606, follow the below steps. Mount the SCCM 1606 media, run the setup and on the setup window, click **Install**.



While the option to install configuration manager primary site is greyed out, the default option selected is upgrade this configuration manager site. Click **Next**.



In the next screen enter the license key, on the license terms window, check all the options and click **Next**.

System Center Configuration Manager Setup Wizard

Product License Terms

You must accept the License Terms and Privacy Statement to continue installation of System Center Configuration Manager.

[View the License Terms](#)

[View the Privacy Statement](#)

I accept these License Terms and Privacy Statement.

During Setup, Configuration Manager will download and store the following software on the site server and then automatically install the software on the site systems or client computers as required.

[View the Microsoft SQL Server Express License Terms](#)

I accept these License Terms.

[View the Microsoft SQL Server Native Client License Terms](#)

I accept these License Terms.

[View the Microsoft Silverlight 5 License Terms online](#)

[View the Microsoft Silverlight 5 Privacy Statement online](#)

[View security and privacy information online for Silverlight 5 and elevated trust mode](#)

This software will automatically update after installation.

I accept these License Terms, Privacy Statement, and automatic updates of Silverlight.

©PrajwalDesai.com

< Previous **Next >** Cancel

Choose the option to either download prerequisite files or if you have downloaded them, provide the path. Click **Next**.

System Center Configuration Manager Setup Wizard

Prerequisite Downloads

Setup requires prerequisite files. Setup can automatically download the files to a location that you specify, or you can use files that have been downloaded previously.

Download required files

Example: \\ServerName\ShareName or C:\Downloads

Path:

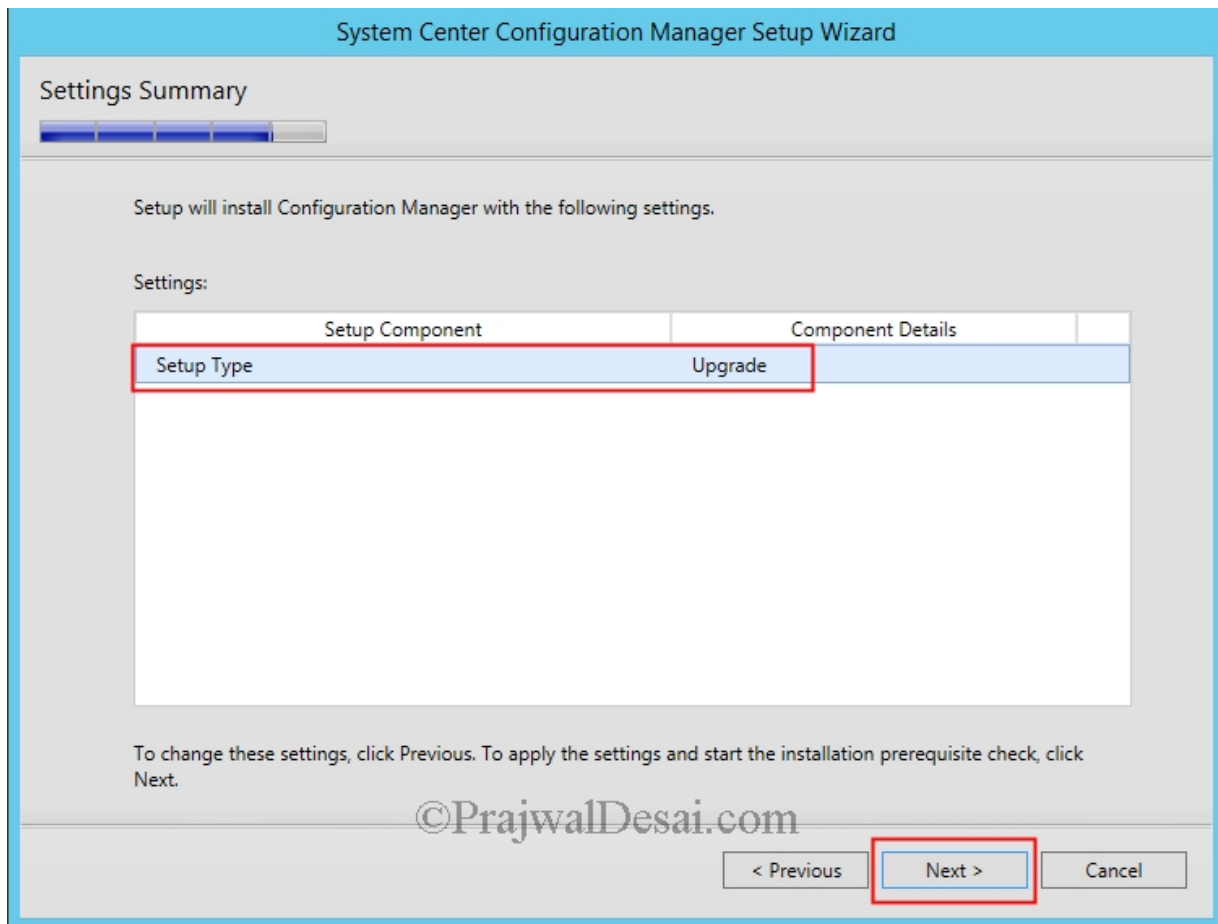
Use previously downloaded files

Example: \\ServerName\ShareName or C:\Downloads

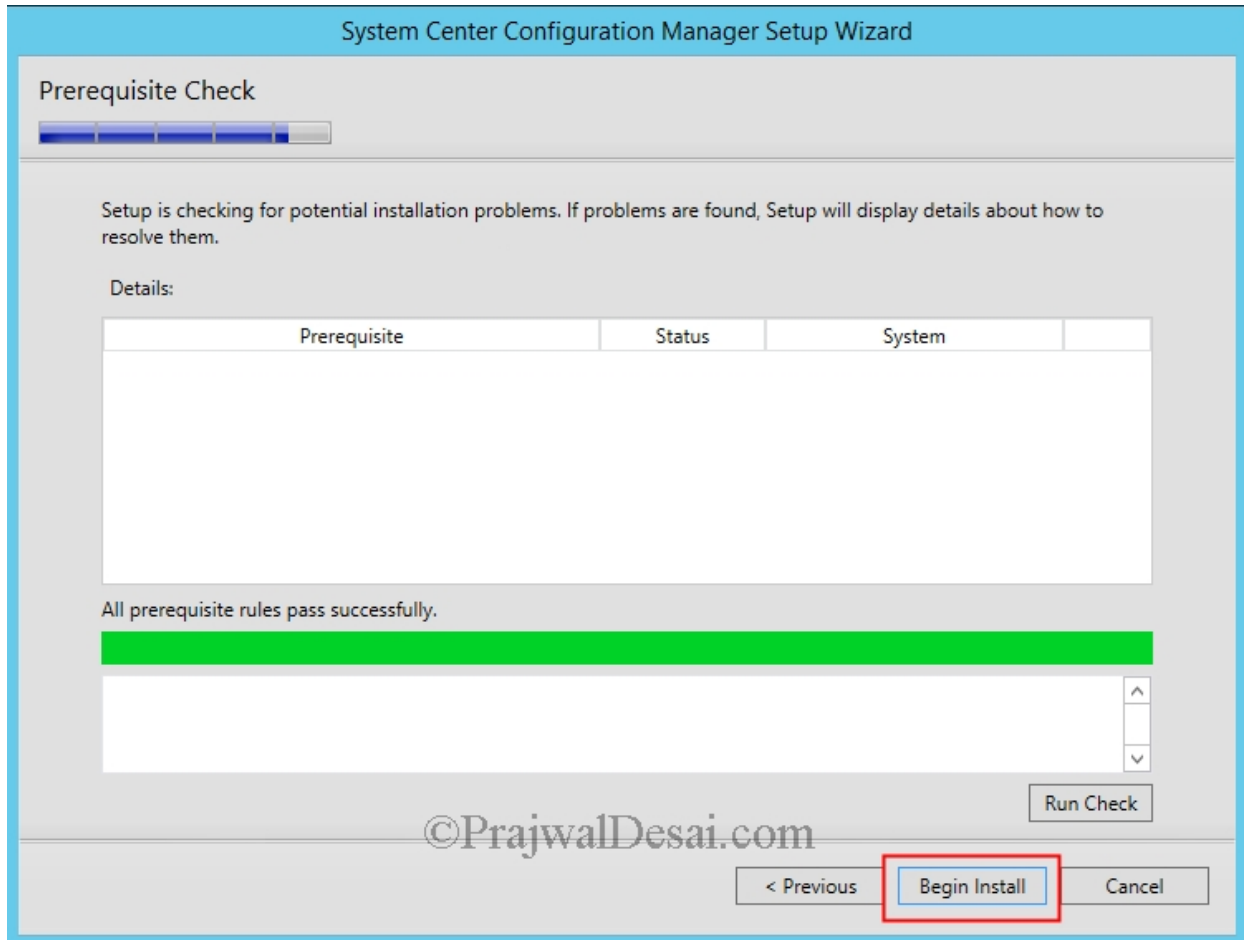
Path:

©PrajwalDesai.com

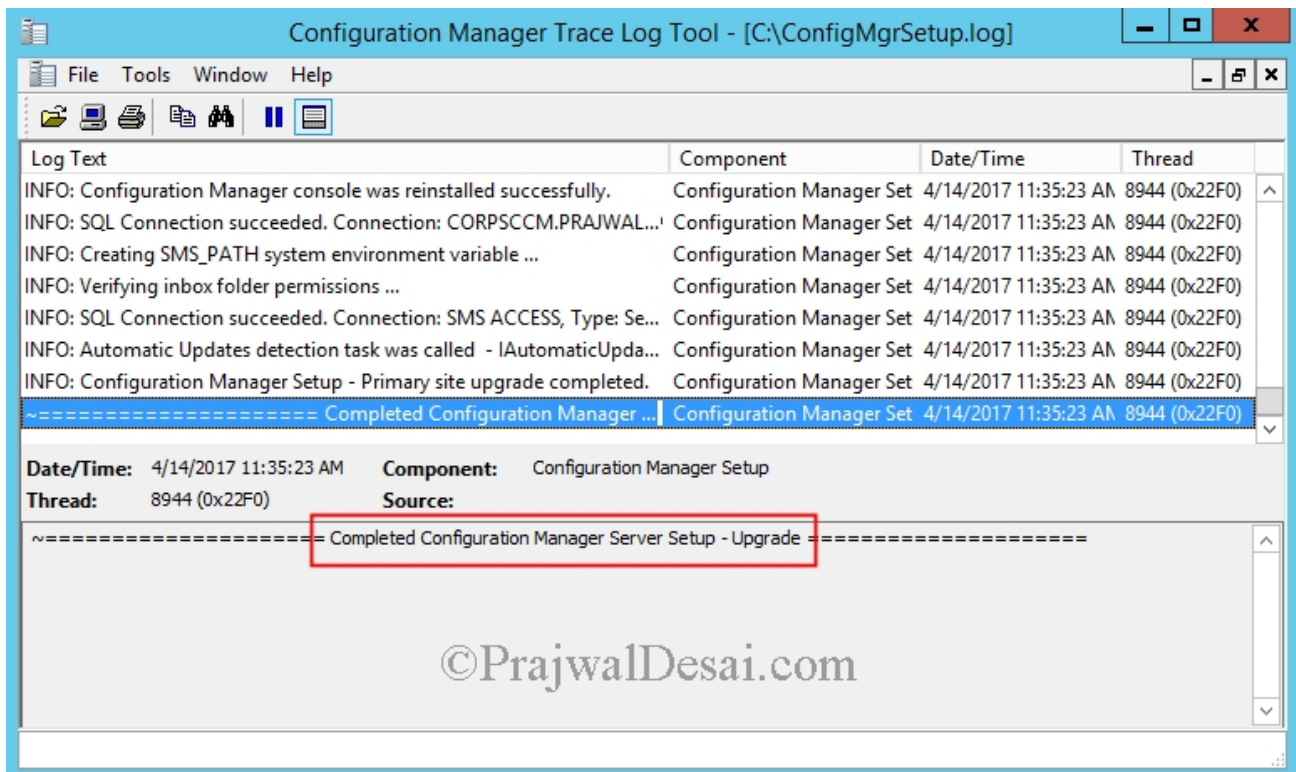
In the next step you will **Setup Type** as **Upgrade**. Click **Next**.



If no warnings are seen here, hit **Begin Install**.



The upgrade process can be monitored by opening **configmgrsetup.log** file.



Post Upgrade – You can complete the below steps post the successful SCCM upgrade.

- Reconfigure any database maintenance tasks you disabled prior to the upgrade.
- Upgrade clients by enabling Automatic client upgrade.
- Enable SQL replication (in case if you have stopped it).
- Redistribute the boot images to distribution points.